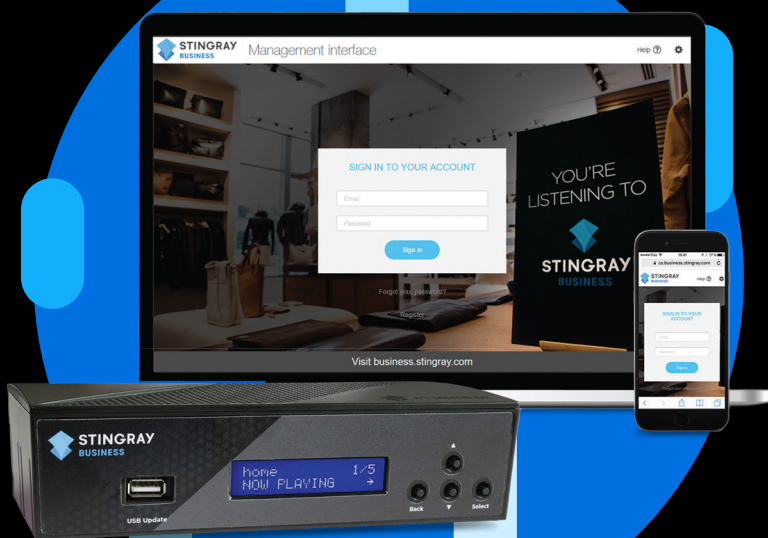




SB3 Media Player Installation Guide



Safety Instructions

- The SB3 should be installed horizontally and right side up. Other orientations may cause problems with air flow and shorten the lifespan of the components.
- The SB3 should be placed in a clean, well-ventilated area. Do not stack items on top of or against it.
- Use the power supply unit provided in the box. Using another power supply, will void the warranty.
- Ensure all cabling is routed properly and safely.
- Ensure your SB3 is plugged into a properly grounded, always-on AC electrical outlet.

Warning

Device should remain powered on at all times.

For optimal performance and reliability, use a surge protected power bar between the SB3 unit and the electrical outlet.

To reduce the risk of fire or electric shock, do not expose this unit to rain or other forms of moisture.

To prevent electric shock, do not connect the polarized plug of the external power supply to an extension cord, receptacle, or other outlet unless the blades can be fully inserted.

To reduce the risk of SB3 malfunction, never place the unit on top of electronic equipment or a surface that may generate heat (e.g. amps, routers, computers, etc.).



Caution

Do not unscrew, open, or manipulate your SB3 device's internal components.

Risk of explosion if internal battery is replaced by an incorrect type.

Welcome

All Good Vibes

Stingray Business is thrilled to offer you its newest media player, the SB3 (Stingray Box): the little box with a big sound. Affordable, user-friendly, and built to last, the SB3's impeccable sound and image quality will allow you to connect with your customers through your very own musical and digital signage signature. The best music for every moment, place, and mood.



Management interface

Log into the remote SB3 Management Interface to start exploring your new musical universe.

Visit **<https://cs.business.stingray.com>** and enter your account information. If you have not received your login information, please contact our support team.

businesssupport@stingray.com
1.888.685.2486

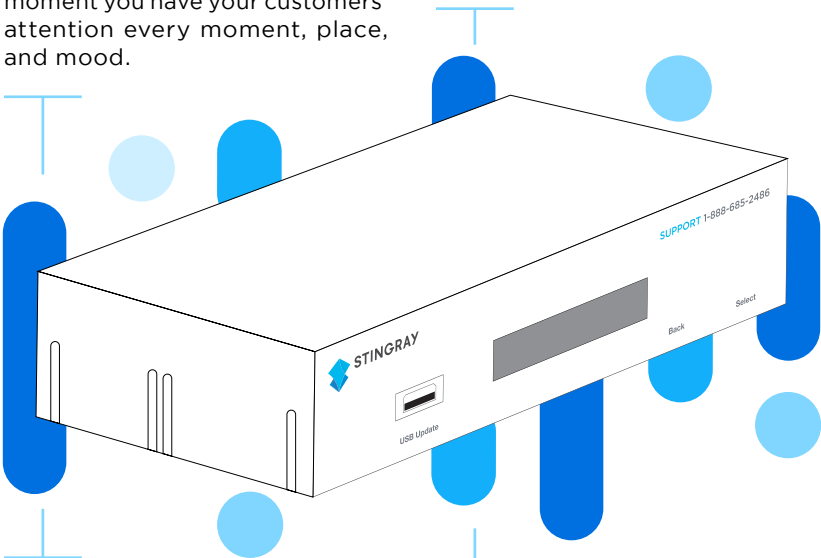


Content

Choose from our preprogrammed collection of channels or craft a totally unique ambiance for your store. Seamlessly integrate music and custom messaging into your programming to maximize every moment you have your customers' attention every moment, place, and mood.

Installation

Not a techie? No problem! Setting up the SB3 is easy. Turn to page 6 to learn how to get started. Can't find what you're looking for? Our customer care team is at your service at all times.



Features and functionalities

Adapt music and messaging to specific spaces with the zoning option.

Block songs, schedule messages, select programs, and more using the web based SB3 Management Interface.

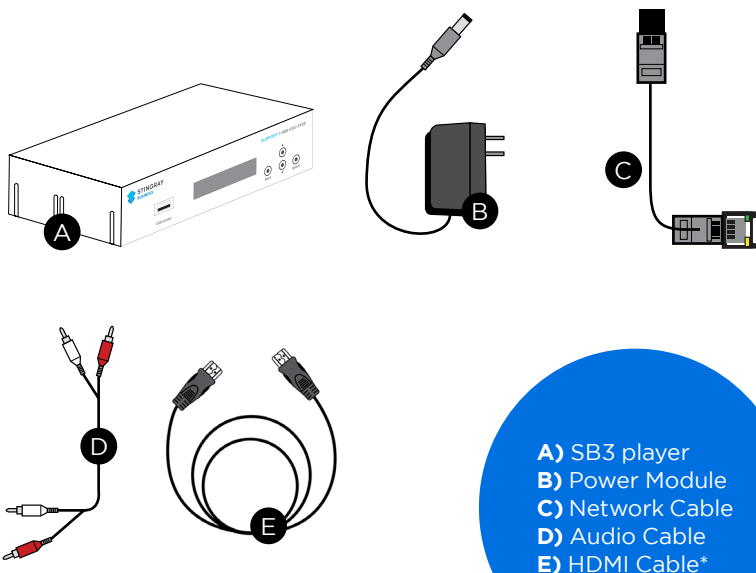
LCD front panel displays song title, artist name, message name, network information, and menu options.

Content updates

The SB3 will arrive at your doorstep configured and ready to play, right out of the box. Subsequent updates will download automatically during your desired download window.

Unpacking

Check your product box for the following items. If there are any missing accessories, call **1.888.685.2486** or contact **businesssupport@stingray.com**. Please keep all packaging material for later use in case your SB3 must be re-shipped.



*Only included with SB3s delivering music videos.

Notes

1

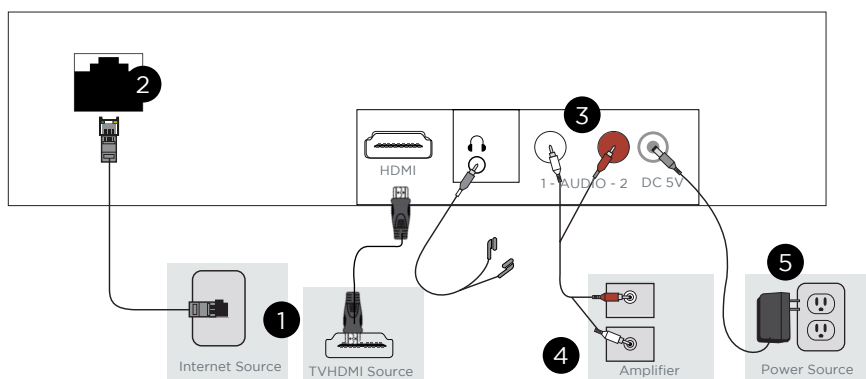
Accessories may vary depending on the device model and your amplification system.

2

To ensure safety and maximize the product's lifespan, do not use any unapproved accessories.

3

Damages or injuries caused by the use of unapproved items are not covered by the warranty.



Setting up the network connection

Skip steps 1 and 2 if your player is configured with a WiFi connection

1. Connect the network cable to an active network connection.
2. Connect the other end of the network cable to the ethernet port on the SB3.

Setting up audio

3. Attach both connectors at one end of your audio cable to the audio jack. Outputs "1" and "2" on your SB3.
4. Attach the other ends of your audio cable to the amplifier inputs. If you only have one amplifier input, only connect one cable head and leave the other one unplugged. You will not be needing it.

Setting up on-hold music and messaging for phone systems (Optional)

To complete the circuit to the telephone system, follow steps 1 through 4, but make sure you attach one head of the audio cable to the amplifier input that is linked to on-hold music.

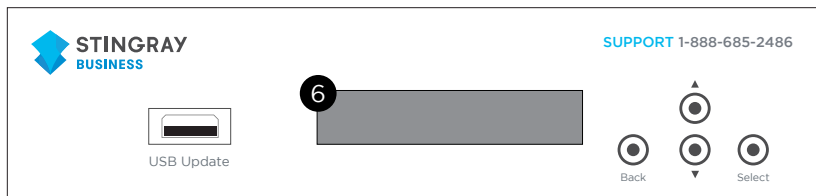
Setting up music videos

To connect your SB3 to a screen, plug one end of the HDMI cable into your SB3's HDMI output and attach the other end to your TV's HDMI input.

Setting up

Setting up power

5. Attach the power module to the power port on the SB3.
6. The LCD screen on your device will light up to indicate that the device has been plugged in properly.



Congratulations!

Your music should start playing momentarily. Remember, your device should remain powered on at all times.

Important information to keep your device up to date

An active network connection must be maintained to receive updates. Content updates will be downloaded onto your device during your preselected download window.

Online Control

Log into the remote SB3 Management Interface to start exploring your new musical universe. Visit <https://cs.business.stingray.com> and log in with your email address.

Management Interface Help Center

Once you have logged into the Management Interface, click “Help” in the upper right corner for instructions on how to use the web platform, manage and troubleshoot the SB3, manage your audio/video content, and create message calendars

Specifications	
Packaging Dimensions	L 9” x W 9” x H 4”
SB3 Dimensions	L 3.75”x W 7 3/4” x H 2”
Power Supply Input	100-240 VAC, 50/60 hz
Power Consumption	5V, 3A
Supported Connector Types	2 RCA outputs (2 mono zones or one stereo zone) and one HDMI output.



Contact us

Email businesssupport@stingray.com
Phone 1.888.685.2486